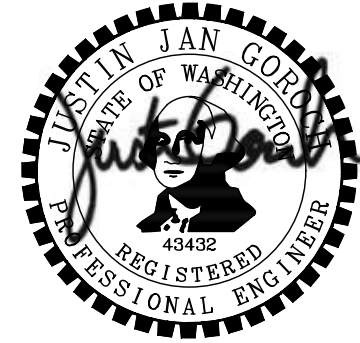
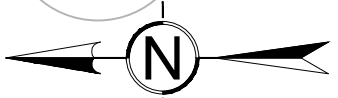
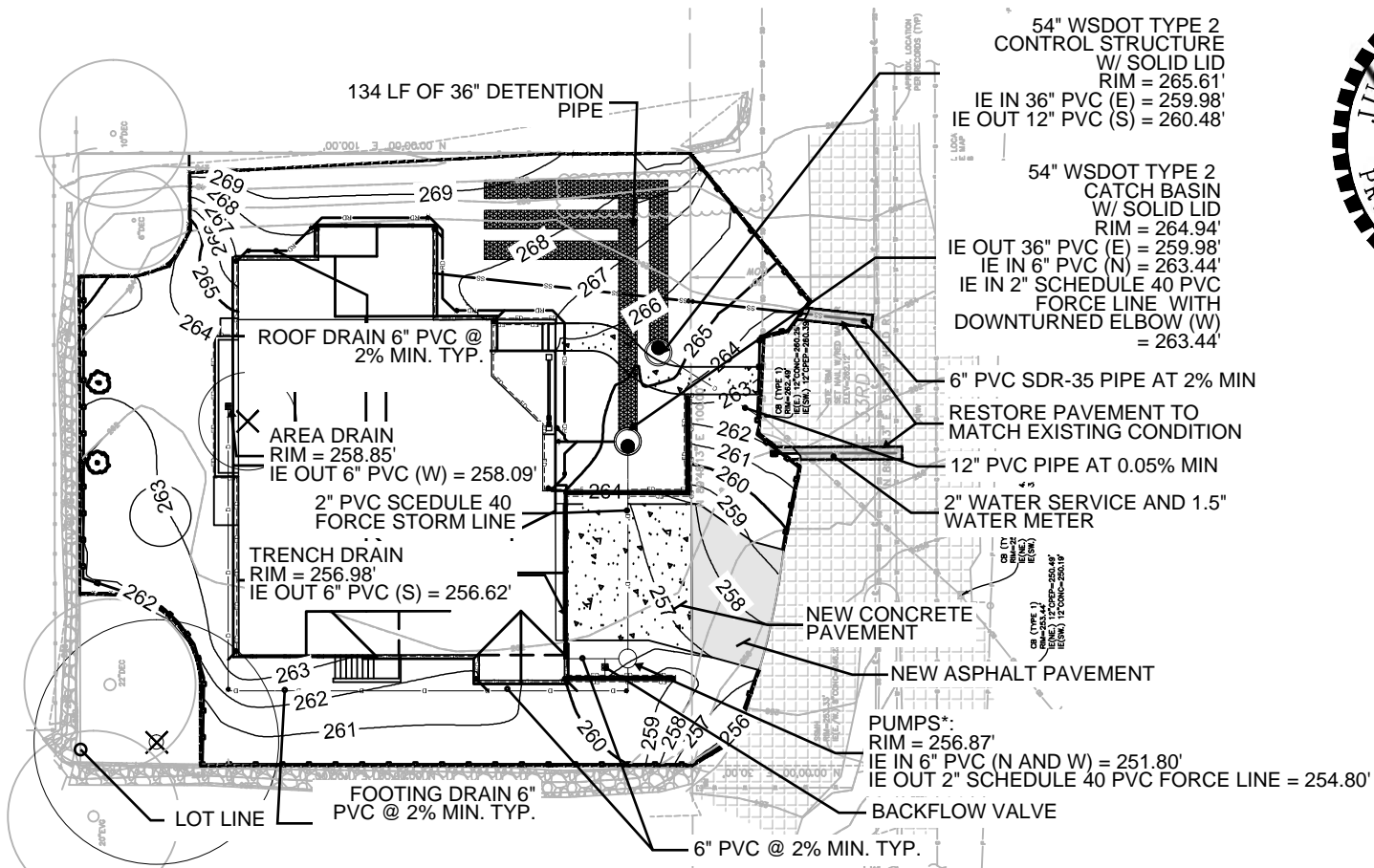


DRAINAGE & EROSION CONTROL PLAN

6922 33RD ST. MERCER ISLAND, WA 98040



10/05/2022



SCALE: 1"=30'

PROVIDE STRAW OR PLASTIC COVER TO ANY EXPOSED SOILS THROUGHOUT CONSTRUCTION CYCLE

SOIL ON ENTIRE SITE CONSISTS OF ARENTS, ALDERWOOD MATERIAL (HSG B/D)

FOOTING DRAINS GO INTO DETENTION SYSTEM SINCE A PUMP IS NEEDED, A BACKFLOW VALVE IS PROVIDED

ALL PERVIOUS SURFACES WITHIN LIMITS OF DISTURBANCE WILL RECEIVE SOIL AMMENDMENTS

INFORMATION TAKEN FROM TOPO & BOUNDARY SURVEY DATED 02/09/2022 BY TERRANE

*PUMPS ARE A DUPLEX PUMP SYSTEM UTILIZING ZOELLER N57 SERIES PUMPS, ZOELLER DUPLEX ELECTRICAL ALTERNATOR CONTROL PANEL/ALARM, APAK Z CONTROL ALARM, AND A TYPE 2 BASIN